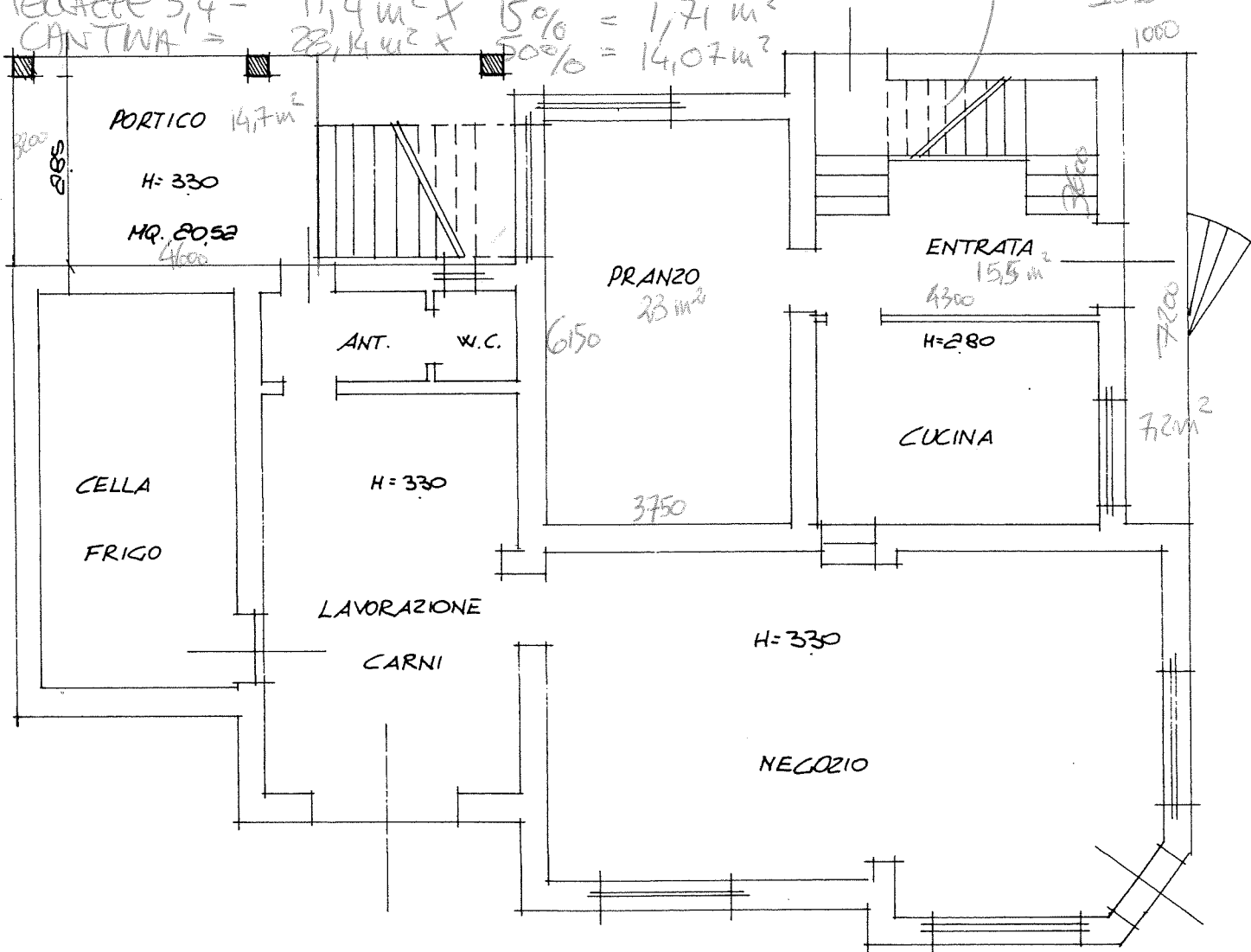


PRANZO = 23 m^2
 PORTICO = $14,7 \text{ m}^2 \times 15\% = 2,2 \text{ m}^2$
 ENTRATA = $25,5 \text{ m}^2$
 TERRAZZO TERRA = $7,2 \text{ m}^2 \times 15\% = 1,08 \text{ m}^2$
 CAMERA + BAGNO = $23,2 \text{ m}^2$
 CAMERA = $24,6 \text{ m}^2$
 CAMERA = 25 m^2
 PIANEROSTOLO = $1,4 \text{ m}^2$
 TERRAZZA 1 = $20,5 \text{ m}^2 \times 15\% = 3 \text{ m}^2$
 TERRAZZA 2 = ~~$50,4 \text{ m}^2$~~ $\times 15\% = 7,56 \text{ m}^2$
 TERRAZZE 3,4 = $11,4 \text{ m}^2 \times 15\% = 1,71 \text{ m}^2$
 CANTINA = $23,4 \text{ m}^2 \times 50\% = 14,07 \text{ m}^2$

$142,3 \text{ m}^2$
 + GIARDINO
 [$112,7 \text{ m}^2$ CALCEST
 $\hookrightarrow 16,9 \text{ m}^2$]

 159 m^2



PIANO TERRA **SC. 1:100**